

ROBIO™

The Robotic Targeting System For
CT Guided Interventions



ROBIO™

The Robotic Targeting System For CT Guided Interventions

Deliver More Everytime

More Procedures

Now offer Robotic assisted pain management, Biopsy and FNAC in addition to your current procedures.

More Referrals

Now support pain specialists and oncologists in addition to your current clientele.

More Revenue

Enhance your revenue stream by offering Imaging + Interventions + Pathology with existing resources.

ROBIO Workflow

5 Simple Steps



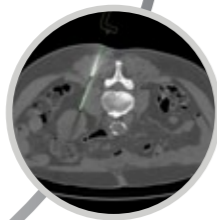
Transfer DICOM 3.0 CT image to Robio Planning Station



Prepare patient for procedure



Plan and confirm for device positioning



Review needle position with plan



Insert needle through the guide

The Robotic Targeting System For CT Guided Interventions

- Pain Care
- Biopsy
- FNAC

ROBIO's ADVANCED PAIN CARE (APC) MODULE:*

Robio's optional APC Module delivers best-in-class features like

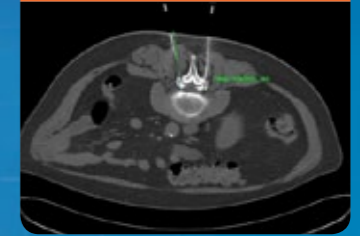
- Sequential positioning of multiple needles
- Patient data management
- Pain-scale scoring
- Integrated procedure reporting

To help you offer speciality procedures like nerve root injections, facetal injections, ganglion injections and SI joint injections

*this is an optional feature.



CONSISTENT ACCURACY



- Navigate through slices
- Execute complex trajectory

SAFE TARGETING



- Safely access smaller & difficult to reach targets

SUPERIOR PATIENT EXPERIENCE



- Easy anaesthesia delivery
- Fewer needle punctures

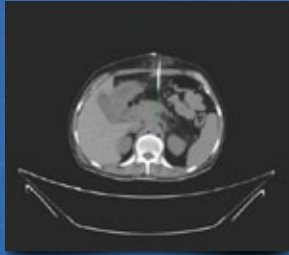
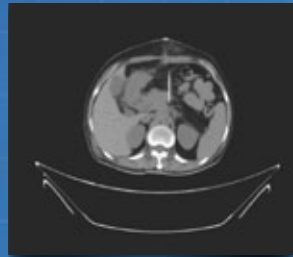
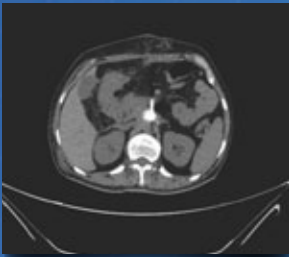
EASY TO USE



- Proven 5 step workflow
- Instant Hot shoe registration

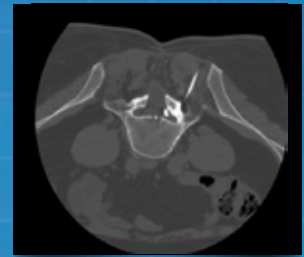
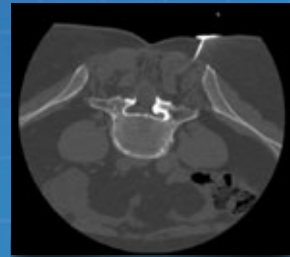
CASE STUDIES

Celiac Plexus Block



Celiac plexus targeted with ROBIO through anterior abdominal wall without traumatizing vital structures in abdomen.

Nerve root block



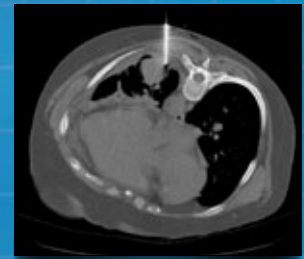
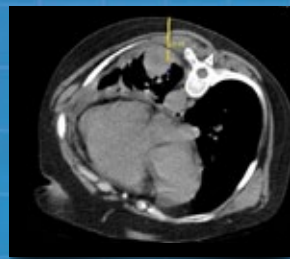
A L5 level nerve root targeted precisely with ROBIO through a narrow path, without traumatizing nerve root. The procedure was done with a single pass

L4 level Epidural Injection



With ROBIO the L5 level Epidural space targeted precisely in single pass, without causing discomfort to the patient.

Nerve root Block



The lung mass, located at depth of 51mm (orbital angle of 3.9 degrees), was precisely targeted in posterior approach with ROBIO. The procedure was planned on the periphery of lesion to avoid necrotic areas. Biopsy done successfully, in a single pass, without traumatizing the lung

© Copyright 2011 Perfint Healthcare Corporation. All rights reserved. (6766 -090712 - Ver 1.0)



Perfint Healthcare Pvt Ltd

3rd Floor, #16, Southwest Boag Road, T.Nagar, Chennai – 600 017, India.
+91.44.24341246/24345911/45506412
info@perfinttech.com | www.perfinttech.com

Chennai | London | Hong Kong | Beijing | Bangkok | Istanbul



Perfint continuously upgrades its products and specs. Please check with your local representative for latest information.

PIGA®, ROBIO® and MAXIO® are trademarks of Perfint Healthcare Corporation.

© Perfint Healthcare Corporation. All rights reserved.